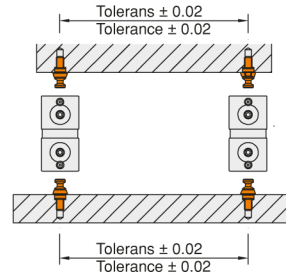


| Referans Nr. | M | D1 (g6) | L2 | L1 | D | L | D2 | D3 | W | (g) |
|--------------|-----|---------|-----|----|------|------|----|-----|-----|-----|
| 0950-06001L | M6 | 8 | 5 | 13 | 11.5 | 10 | 8 | 4.8 | 2.5 | 6 |
| 0950-08061L | M6 | 10 | 5 | 17 | 15.5 | 16.5 | 11 | 6.5 | 3 | 17 |
| 0950-08001L | M8 | 12 | 5 | 17 | 15.5 | 16.5 | 11 | 6.5 | 3 | 20 |
| 0950-12081L | M8 | 12 | 5 | 17 | 24.5 | 25 | 16 | 9.5 | 5 | 52 |
| 0950-12001L | M12 | 18 | 6 | 24 | 24.5 | 25 | 16 | 9.5 | 5 | 70 |
| 0950-16121L | M12 | 18 | 6 | 24 | 31.5 | 33 | 21 | 13 | 6 | 125 |
| 0950-16001L | M16 | 22 | 7.5 | 30 | 31.5 | 33 | 21 | 13 | 6 | 150 |

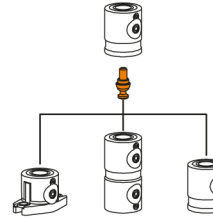
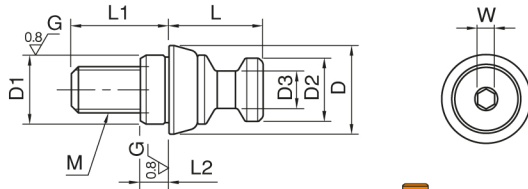


Ürün Nr. 0950 5-Eksen Blok Bağlama Çektirme Civatası

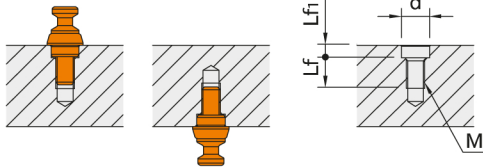
- Tolerans ± 0.02

Product Nr. 0950 5-Axis Clamping Block Puller Bolt

- Tolerance ± 0.02



Uygulama Örneği Application Example



| Referans Nr. | d (H7) | Lf | Lf1 | M |
|--------------|--------|----|-----|-----|
| 0950-06001L | 8 | 9 | 5.5 | M6 |
| 0950-08061L | 10 | 13 | 5.5 | M6 |
| 0950-08001L | 12 | 13 | 5.5 | M8 |
| 0950-12081L | 12 | 13 | 5.5 | M8 |
| 0950-12001L | 18 | 19 | 6.5 | M12 |
| 0950-16121L | 18 | 23 | 6.5 | M12 |
| 0950-16001L | 22 | 23 | 8 | M16 |

