
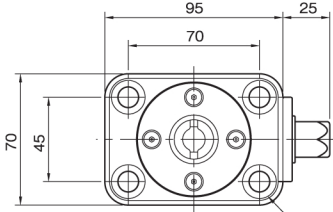




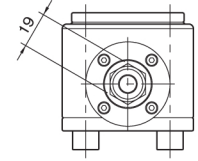
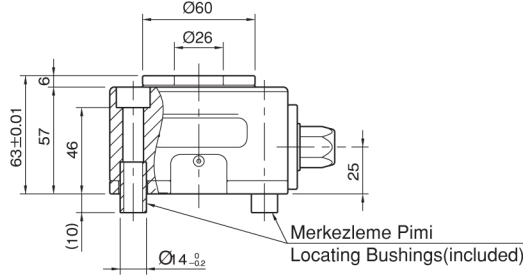
Referans Nr.	Sıkma Kuvveti Clamping Force Kgf	Tork N-m	 (kg)
1477-00012	1200	40	2.3

Ürün Nr. 1477 Pimli Bağlama

Product Nr. 1477 Power-tool Actuated Block Pull Clamps



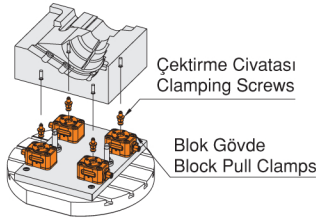
Sabitleme Cıvata Yeri
For M10 Cap Screws



1. 5 Eksen İşleme için İdeal Kullanım
İş parçasının bütün açık yüzeylerini işleme olanağı sağlar.

1. Ideal for 5-Axis Machining

Block Pull Clamps mount under a workpiece making its surfaces to be machined fully open for the cutting tool. This allows completing multiple machining processes at a time.



2. Daha iyi İşlenebilirlik

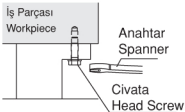
Blok çekme ile daha kolay iş bağlama ve klasik yöntemden daha kullanışlıdır.

3. Uzun Anahtar Ünite Kullanımı

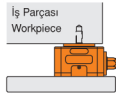
Birden fazla farklı parçaları işleme olanağı sağlar.

3. Actuated Remote-Control Units

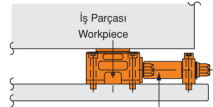
If used in conjunction with Power-Tool Actuated Remote-Control Units, Block Pull Clamps can be installed at the best possible position under the workpiece.



Mevcut Uygulama
Conventional Method



Çektirme Cıvatası ile Uygulama
Application with pull stud



Uzun Anahtar Aktuatörü Ünitesi
Power-Tool Actuated Remote-Control Unit

Kullanım Şekli / How To Use

