

| Referans Nr. | d | h (±0.01) | d1 (g6) | h1 | M | h2 | dp | p (±0.02) | w | h3 | M1 | İzin Verilen Vida Torku Allowable Screw Torque (N·m) | (kg) |
|------------------|-----|--------------|------------|----|-----|----|-----|--------------|----|----|----------|--|------|
| 1486-CP125.06501 | 65 | 25 | 28 | 12 | M6 | 27 | 42 | 22 | 8 | 12 | M8x1.25 | 15 | 0.8 |
| 1486-CP125.09001 | 90 | 30 | 42 | 14 | M8 | 30 | 60 | 30 | 8 | 14 | M10x1.5 | 25 | 1.7 |
| 1486-CP125.12001 | 120 | 35 | 55 | 18 | M10 | 33 | 80 | 43 | 10 | 16 | M10x1.5 | 40 | 3.5 |
| 1486-CP125.16001 | 160 | 40 | 63 | 24 | M12 | 36 | 110 | 60 | 10 | 18 | M12x1.75 | 40 | 7.1 |

Uygun Çene / Proper Jaws

| Dış Form Tutamağı İçin / For External Form Holding | | | İç Form Tutamağı İçin / For Internal Form Holding | | |
|--|---|--------------------------------|---|---|--------------------------------|
| Referans Nr. | Sıkma Kuvveti Clamping Force (kN) | Sıkma Torku Clamping Torque | Referans Nr. | Sıkma Kuvveti Clamping Force (kN) | Sıkma Torku Clamping Torque |
| 1486-CP126.06501 | 4.5 | Ø 0.3 | 1486-CP127.06501 | 4.5 | Ø 0.3 |
| 1486-CP126.09001 | 7 | | 1486-CP127.09001 | 7 | |
| 1486-CP126.12001 | 10 | | 1486-CP127.12001 | 10 | |
| 1486-CP126.16001 | 12 | | 1486-CP127.16001 | 10 | |



Ürün Nr. 1486 İç ve Dış Çap Bağlama

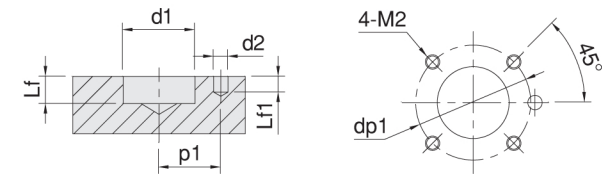
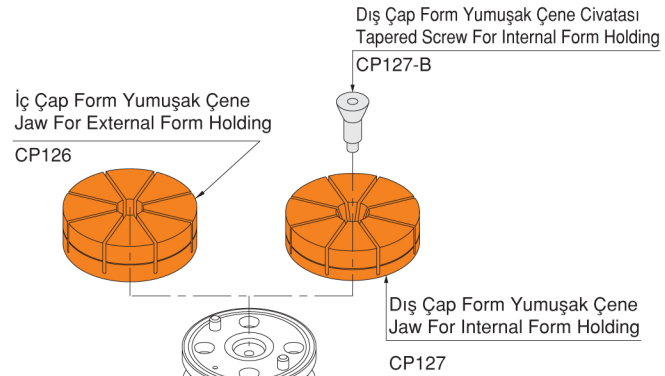
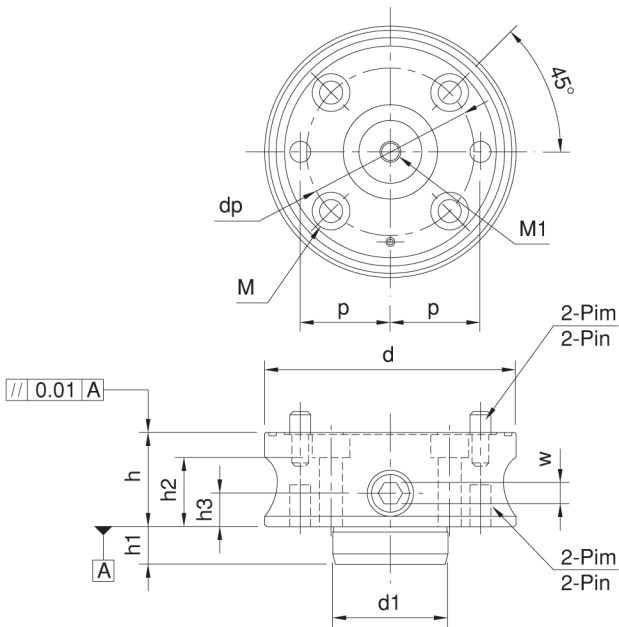
- Nikel Kaplama
- Parça Tekrarlanabilirlik ±0.03
- Yumuşak Ayak Tekrarlanabilirlik ±0.03

Product Nr. 1486 Inner and Outer Diameter Clamp

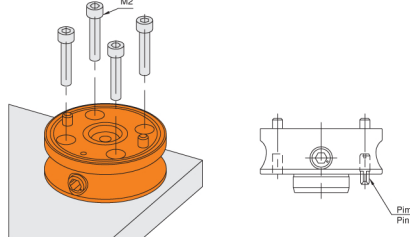
- Nickel Coating
- Part locating repeatability: ±0.03
- Jaw locating repeatability: ±0.02

Not: Yumuşak Ayak Ayrı Sipariş Verilir.

Note: Jaws must be ordered separately.



| Referans Nr. | d1 (H7) | Lf | d2 (G7) | Lf1 | p1 (±0.02) | M2 | dp1 |
|------------------|------------|----|------------|-----|---------------|----------|-----|
| 1486-CP125.06501 | 28 | 13 | 6 | 6 | 22 | M 6x1 | 42 |
| 1486-CP125.09001 | 42 | 15 | 8 | 8 | 30 | M 8x1.25 | 60 |
| 1486-CP125.12001 | 55 | 19 | 10 | 11 | 43 | M10x1.5 | 80 |
| 1486-CP125.16001 | 63 | 25 | 12 | 13 | 60 | M12x1.75 | 110 |



Pim Ölçüleri / Pin Dimensions

| Referans Nr. | Çap Diameter |
|------------------|-----------------|
| 1486-CP125.06501 | Ø 6h6 |
| 1486-CP125.09001 | Ø 8h6 |
| 1486-CP125.12001 | Ø 10h6 |
| 1486-CP125.16001 | Ø 12h6 |