



Referans Nr.	d x L	b1	b	Sıkma Verileri Tightening Data		 (g)
				Nm	kN	
1690-08040	x40		20			10
1690-08063	x63		40			15
1690-08080	x80		50			20
1690-08100	x100		63			30
1690-08125	x125		75			35
1690-08160	x160		100			45
1690-10050	x50		25			20
1690-10063	x63		32			25
1690-10080	x80		50			35
1690-10100	x100		63			45
1690-10125	x125		75			55
1690-10160	x160		100			70
1690-10200	x200		125			95
1690-12050	x50		25			35
1690-12063	x63		32			40
1690-12080	x80		50			55
1690-12100	x100		63			70
1690-12125	x125		75			90
1690-12160	x160		100			115
1690-12200	x200		125			140
1690-14063	x63		32			60
1690-14080	x80		50			75
1690-14100	x100		63			95
1690-14125	x125		75			120
1690-14160	x160		100			150
1690-14200	x200		125			195
1690-14250	x250		160			240
1690-16063	x63		32			85
1690-16080	x80		50			105
1690-16100	x100		63			130
1690-16125	x125		75			160
1690-16160	x160		100			205
1690-16200	x200		125			260
1690-16250	x250		160			325
1690-16315	x315		180			405
1690-16500	x500		315			650
1690-18080	x80		50			130
1690-18100	x100		60			160
1690-18125	x125		75			200
1690-18160	x160		100			260
1690-18200	x200		125			320
1690-18250	x250		150			400
1690-18315	x315		180			510
1690-20080	x80		32			155
1690-20100	x100		60			200
1690-20125	x125		70			250
1690-20160	x160		100			330
1690-20200	x200		125			400
1690-20250	x250		160			510
1690-20315	x315		200			640
1690-20400	x400		250			815
1690-20500	x500		315			1020
1690-22100	x100		45			250
1690-22125	x125		70			305
1690-22160	x160		100			400
1690-22200	x200		125			500
1690-22250	x250		160			620
1690-22315	x315		180			780
1690-22400	x400		250			1010
1690-24100	x100		45			290
1690-24125	x125		70			365
1690-24160	x160		100			470
1690-24200	x200		125			580
1690-24250	x250		160			730
1690-24315	x315		200			920
1690-24400	x400		250			1170
1690-24500	x500		315			1470
1690-24630	x630		315			1860
1690-30125	x125		56			570
1690-30200	x200		125			910
1690-30250	x250		160			1150
1690-30315	x315		200			1435
1690-30500	x500		315			2315
1690-30700	x700		400			3215
1690-301000	x1000		400			4700

Referans Nr.	d x L	b1	b	Sıkma Verileri Tightening Data		 (g)
				Nm	kN	
1690-36160	x160		80			1100
1690-36200	x200		125			1340
1690-36250	x250		160			1710
1690-36315	x315		200			2150
1690-36400	x400		250			2700
1690-36500	x500		315			3450
1690-36700	x700		400			4750
1690-42315	x315		200			2950
1690-42400	x400		250			3750
1690-42500	x500		315			4690

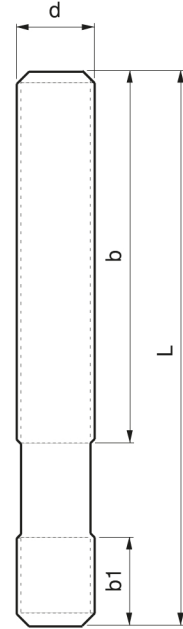
DIN 6379

Ürün Nr. 1690 Düz Saplama

- Kalite 10.9
- Siyah kaplama

Product Nr. 1690 Straight Stud

- Quality 10.9
- Black coating



Note: 150 °C üzerindeki ortamlarda sıkma işlemi yapılırken dişlerin üzerine Loctite 8150 kullanılır.

Note: Environments on the 150 °C when clamping action on the thread Loctite 8150 is used.



Loctite 8150