

Referans Nr.	a	b	Ød	e	f	t	(kg)
2530-040012	400	600	18	-	-	M12	73
2530-050012	500	600	18	-	-	M12	112
2530-060012	600	800	18	-	-	M12	162
2530-140012	400	800	18	-	-	M12	119
2530-145012	450	900	18	-	-	M12	151
2530-150012	500	1000	18	-	-	M12	173

Referans Nr.	a	b	Ød	e	f	(kg)
2540-040012	400	600	18	-	-	73
2540-050012	500	600	18	-	-	112
2540-060012	600	800	18	-	-	162
2540-140012	400	800	18	-	-	119
2540-145012	450	900	18	-	-	151
2540-150012	500	1000	18	-	-	173

Referans Nr.	a	b	Ød	e	f	t	(kg)
2530-040016	400	600	18	-	-	M16	87
2530-050016	500	600	18	-	-	M16	108
2530-060016	600	800	18	-	-	M16	155
2530-140016	400	800	18	-	-	M16	115
2530-145016	450	900	18	-	-	M16	146
2530-150016	500	1000	18	-	-	M16	171

Referans Nr.	a	b	Ød	e	f	(kg)
2540-040016	400	600	18	-	-	87
2540-050016	500	600	18	-	-	108
2540-060016	600	800	18	-	-	155
2540-140016	400	800	18	-	-	115
2540-145016	450	900	18	-	-	146
2540-150016	500	1000	18	-	-	171

Ürün Nr. 2530 - 2540

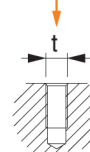
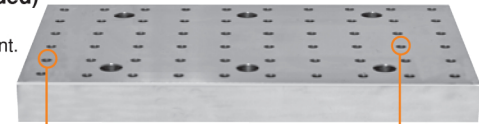
CNC Dik İşleme Pleyti (Dişli)

- Malzeme : Döküm
- Standart bağlama ekipmanlarına uyumludur.
- Yüzeyinde M12-M16 diş Merkez aralığı 50 ± 0.02
- Nr. 2530 Gövdeye dişli
- Nr. 2540 Çelik burçlu

Product Nr. 2530 - 2540

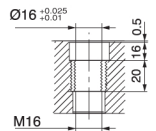
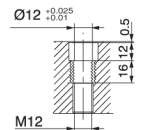
CNC Vertical Processing Plate (with Threaded)

- Material : Casting
- It is in compliance with Standard Coupling Equipment.
- M12 - M16 thread gap on it's surface is 50 ± 0.02 .
- Nr. 2530 Threaded body
- Nr. 2540 Steel bush



Gövdeye dişli
Referans Nr. 2530

Threaded body
Reference No. 2530



Çelik burçlu
Referans Nr. 2540

Steel bush
Reference No. 2540

