

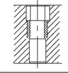

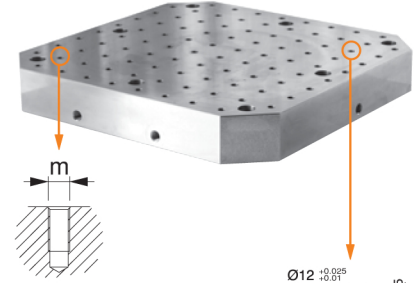
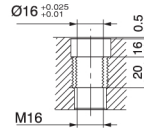
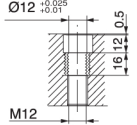


Referans Nr.	a ±0.02	b	c	d	e		 (kg)
2510-7540012	75	400	320	55	25	M12	80
2510-7550012	75	500	400	75	25	M12	127
2510-7563012	75	630	500	100	40	M12	204
2510-7540016	75	400	320	55	25	M16	79
2510-7550016	75	500	400	75	25	M16	125
2510-7563016	75	630	500	100	40	M16	200

Referans Nr.	a ±0.02	b	c	d	e		 (kg)
2520-7540012	75	400	320	55	25	M12	80
2520-7550012	75	500	400	75	25	M12	127
2520-7563012	75	630	500	100	40	M12	204
2520-7540016	75	400	320	55	25	M16	79
2520-7550016	75	500	400	75	25	M16	125
2520-7563016	75	630	500	100	40	M16	200



Gövdeye dişli  
Referans Nr. 2510  
Threaded body  
Reference No. 2510

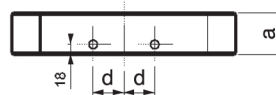
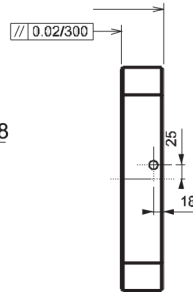
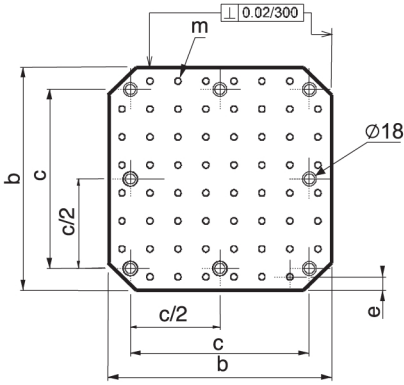


### Ürün Nr. 2510 Yatay İşleme Tablası Delikli

- Malzeme : Döküm
- Standart bağlama ekipmanlarına uyumludur.
- Yüzeyinde M12 - M16 diş merkez aralığı  $50 \pm 0.02$
- Çelik burçlu dişleri sertleştirilmiştir.

### Product Nr. 2510 Horizontal Clamping Pallet with Grid Holes

- Material : Casting
- It is in compliance with Standard Coupling Equipment.
- M12 - M16 thread gap on it's surface is  $50 \pm 0.02$ .
- It's steel bush threads are hardened.



Çelik burçlu  
Referans Nr. 2520

Steel bush  
Reference No. 2520