

| Referans Nr. | S | W  | W1 | H1 | L1   | P  | D<br>(h7) | H2 | M   | L  | H  | T   | Sıkma Kuvveti<br>Clamping Force<br>Kgf | Tork Değeri<br>Allowable Screw<br>Torque (N-m) | <br>(g) |
|--------------|---|----|----|----|------|----|-----------|----|-----|----|----|-----|----------------------------------------|------------------------------------------------|--------------------------------------------------------------------------------------------|
| 2143-08015   | 3 | 25 | 10 | 25 | 21.5 | 10 | 6         | 7  | M8  | 32 | 15 | 1.6 | 700                                    | 25                                             | 115                                                                                        |
| 2143-10019   | 4 | 30 | 11 | 32 | 26   | 12 | 6         | 7  | M10 | 40 | 19 | 2   | 850                                    | 50                                             | 225                                                                                        |
| 2143-12023   | 5 | 35 | 12 | 38 | 33   | 16 | 8         | 10 | M12 | 50 | 23 | 2.3 | 2000                                   | 90                                             | 390                                                                                        |
| 2143-16025   | 6 | 40 | 14 | 45 | 40   | 20 | 10        | 10 | M16 | 60 | 25 | 3.2 | 3000                                   | 150                                            | 640                                                                                        |

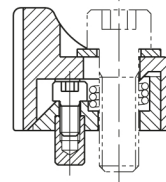
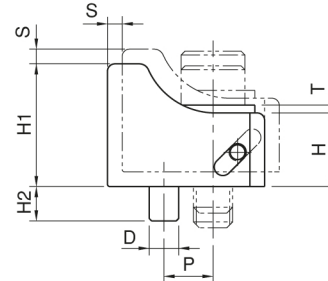


**Ürün Nr. 2143 Yandan Bağlama**

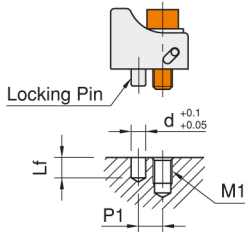
- Sertleştirilmiş
- Siyah Kaplama

**Product Nr. 2143 Side Clamps**

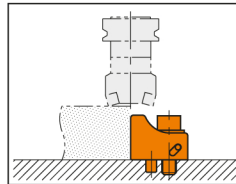
- Hardened
- Black coating



**Kurulum ve Kullanım Şekli / How To Use and Install**

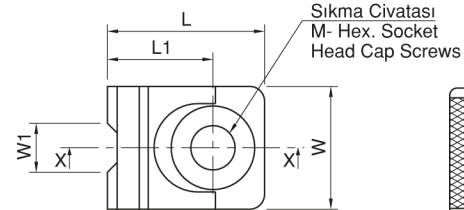


| Nr.         | M1  | d  | Lf | P1 |
|-------------|-----|----|----|----|
| CP107-08015 | M 8 | 6  | 8  | 10 |
| CP107-10019 | M10 |    |    | 12 |
| CP107-12023 | M12 | 11 | 11 | 16 |
| CP107-16025 | M16 |    |    | 20 |



Üst tarafta görüldüğü gibi sabitlemek için bir pim, bir civata deliği gerekli.

Drill a cap-screw hole and a locking-pin hole as specified on the up.



Sıkma Civatası  
M- Hex. Socket  
Head Cap Screws

